

Business Capability Statement

# General Construction



## ●●● Introduction

2 Types Constructions P/L provides premium construction services to education, not-for-profit, government and commercial companies in Australia. We are passionate about what we do, and our experience enables us to understand the needs of every client. We listen, then deliver the best solution to fit the requirement.

Our approach to sustainability, project management, and safety positions us at the cornerstone of construction industry best practice. Ten years and thousands of successful projects have provided priceless knowledge and experience, and our team is built upon those foundations.

We understand that our clients are the reason we are in business, which is why every client is treated with the same attention to detail, respect, and consideration. We commit to upholding gold standards throughout our interactions, and our in-house competencies and resource pool means we can respond swiftly to our client needs, while delivering exceptional work.

People are at the heart of 2 Types Constructions P/L and throughout the business we exemplify a transparent, dependable, and reliable approach.

We have a long history of delivering outstanding levels of quality and safety, and we do it with a fresh 'can-do' attitude. Our track record in construction underpins the knowledge that transfers to all construction projects; we deliver the same top-level finish on all work we undertake, whatever the value.

Throughout every project we adopt our client's objectives. From budget management to embracing strategic goals, we are committed to achieving the best outcome.

## ●●● Our expertise covers the following:

- Demountable buildings
- Alterations and additions
- Renovations and refurbishments
- Partitioning and suspended ceilings
- Architectural ceilings
- Specialty joinery
- Acoustic panelling
- External cladding
- Metal roofing

# ●●● Quality, Safety, and Environmental Management Systems

2 Types Constructions P/L is dedicated to upholding the best standards of control measures. Across the organisation, our management systems and procedures ensure adherence to regulatory guidelines so that we can carry out the highest quality of work in the most safe and sustainable ways possible.

Our objectives include the following:

- Site specific environmental and safety plans and controls.
- A reduction of waste through use of low environmental impact products and recycling, where possible.
- A waste management strategy that ensures we exceed statutory requirements and adhere to regulations and codes of practice.
- A commitment to deliver timely results within budget, without sacrificing professionalism or efficiency.
- Internal audits, which ensure adherence to statutory duties, regulations, and codes of practice.
- Expertise and knowledge that drives our project design and implementation with an innovative approach. We use the past to inform the future.

## ●●● Accreditation

We are pleased to confirm accreditation in each of the following international standards.

- **ISO 14001** the international standard prescribing a structured approach to environmental protection.
- **ISO 9001** the internationally recognized Quality Management System (QMS).
- **ISO 45001** for the prevention of work-related injury and ill-health and to provide safe and healthy workplaces.

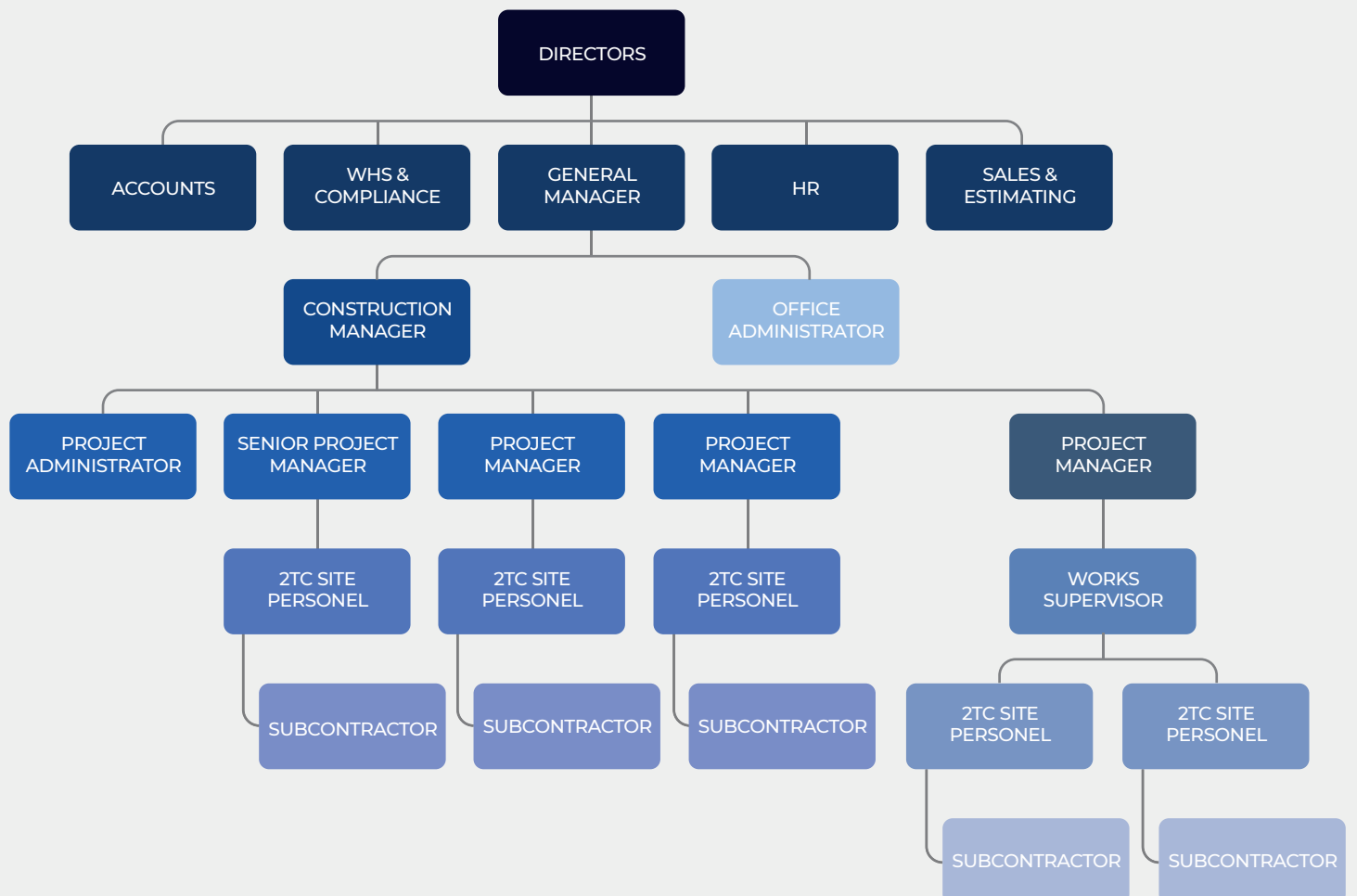




# ●●● Organisational Structure

2 Types Constructions P/L is a company built on strong relationships and robust management systems. We believe in a shared responsibility, with transparency and trust as fundamental elements of our culture.

This all-inclusive approach within our team flows through to our subcontractors, so whether you are speaking to staff in the office or a carpenter on-site, you can expect the same level of care.



# ●●● Why Us?

2 Types Constructions P/L is a multi-disciplined company, working with clients and subcontractors to deliver a valued service with every project. We are committed to providing timely, cost efficient, and environmentally friendly services time and again. Safety is paramount, and quality and value are instrumental aspects of our work.

Our hard work and commitment enable us to meet client needs on all projects we undertake.

We strive on the organisation-wide belief that collaboration and relationships are the keys to success. This extends beyond our own people, and we view every client as a partner and treat them accordingly.

Our core values inform our founding principles, and they are the reason that clients trust us and choose to partner with us.

**TEAM**

**YOU**

**PASSION**

**EXCELLENCE**

**SAFETY**

**Collectively as a team, we make a difference**

**Believe in yourself, be you!**

**The driving force to commit and strive**

**To exceed expectations to achieve success**

**Prioritising the safety and health of our Employees, clients and the community**



We welcome your questions and ideas and will help you find the best possible solution for your needs.

If you'd like to discuss your project, you can reach out to us:



[info@2types.com.au](mailto:info@2types.com.au)



0448 482 462

We look forward to hearing from you.